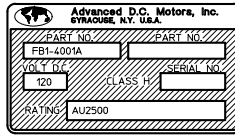
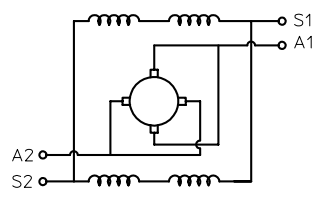
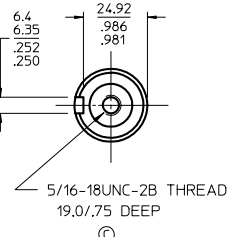
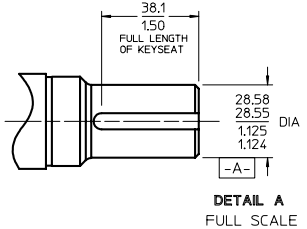
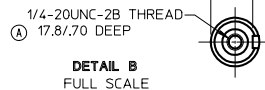
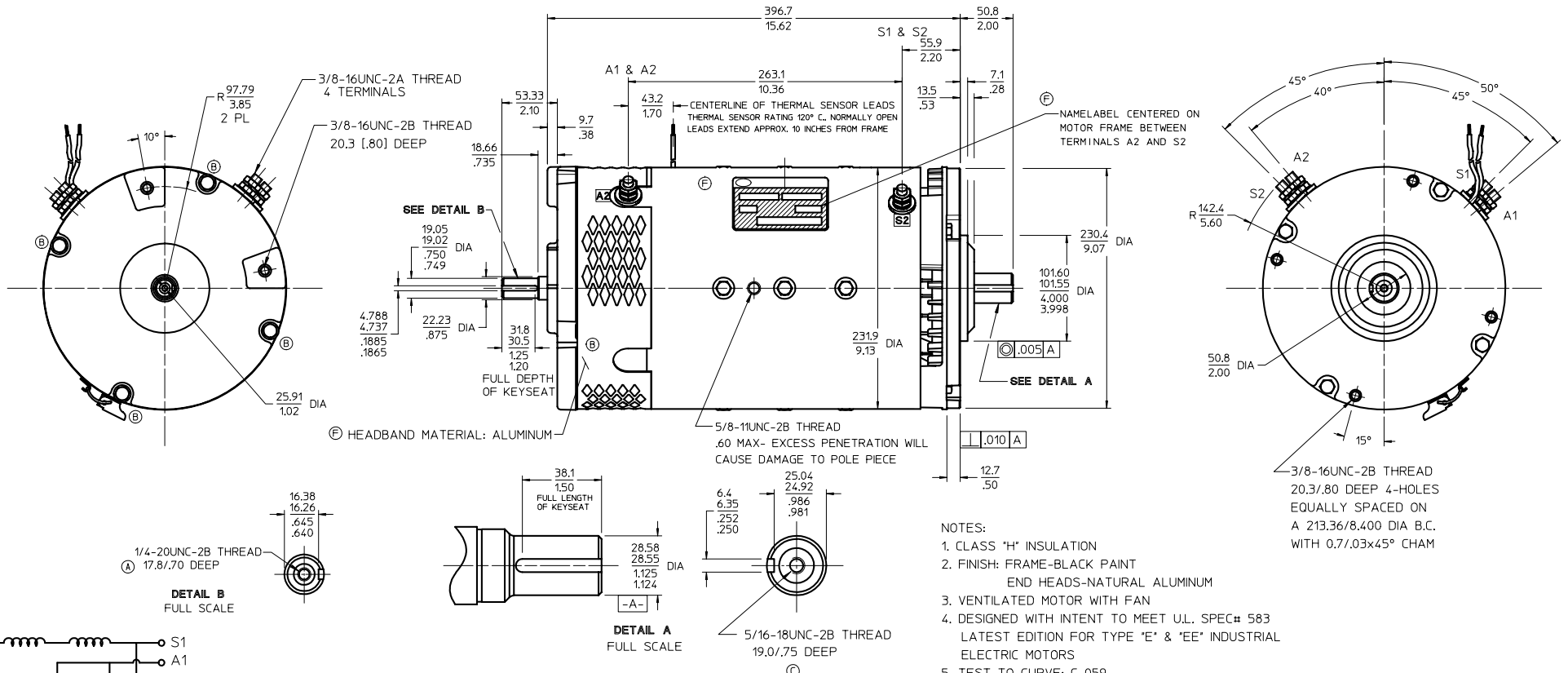


Notice - Advanced D.C. Motors, Inc. claims proprietary rights in the information disclosed on this drawing. It is issued in confidence for engineering information only and may not be used, in whole or in part, to manufacture anything whether or not shown hereon, reproduced or disclosed to anyone without direct written permission from Advanced D.C. Motors, Inc.

-NAME LABEL STAMPED WITH ADVANCED PART NO. CUSTOMER PART NO. AND 120 VOLT
 -NAME LABEL STAMPED WITH U.L. ID. NO. AU2500 & CURRENT DATE IN RATING BOX
 -CODE DATE STAMPED ON FRAME NEAR NAME LABEL



OUTLINE DIMENSIONS ARE NOMINAL UNLESS TOLERANCES ARE SPECIFIED



ROTATION - REVERSIBLE
 C.W.D.E.
 CONNECT S-1 TO ONE BATTERY TERMINAL
 CONNECT S-2 TO A-1
 CONNECT A-2 TO OTHER BATTERY TERMINAL
 C.C.W.D.E.
 CONNECT S-1 TO ONE BATTERY TERMINAL
 CONNECT S-2 TO A-2
 CONNECT A-1 TO OTHER BATTERY TERMINAL

- NOTES:
1. CLASS "H" INSULATION
 2. FINISH: FRAME-BLACK PAINT
END HEADS-NATURAL ALUMINUM
 3. VENTILATED MOTOR WITH FAN
 4. DESIGNED WITH INTENT TO MEET U.L. SPEC# 583 LATEST EDITION FOR TYPE "E" & "EE" INDUSTRIAL ELECTRIC MOTORS
 5. TEST TO CURVE: C-059
 6. TEST SPECIFICATION: SC-022
 7. MOTOR WEIGHT: 143 LB/64.9 kg
 8. DESIGNED TO OPERATE IN C.C.W. ROTATION FORWARD VEHICLE OPERATION

72/120 VOLT

MILLIMETER / INCHES OR MILLIMETER / INCHES

PROJECTION THIRD ANGLE

Zone	Rev	Was	By	Date
F		UPDATE/CLEAR LABEL POS. PER 458	P.H.	07-30-04
E		CLARIFY LABEL LOCATION PCR#919	PGF	04-16-98
D		CHANGED LABEL PCR#1793	EH	12-05-97
D-3	C	WAS 25.4/100 DP.	PCR#980	04-28-95
B		CHG TO CONFORM TO DETAIL	PCR#916	02-13-95
A		WAS 25.4/100 DP.	PCR#493	04-07-93
		REDRAWN IN CAD LAST REV U	TMC	09-16-92

Name TRACTION MOTOR OUTLINE			
SIZE D	Scale 1/2	Drawn MM	Date 04-19-91
Part No FB1-4001A			

LO-60